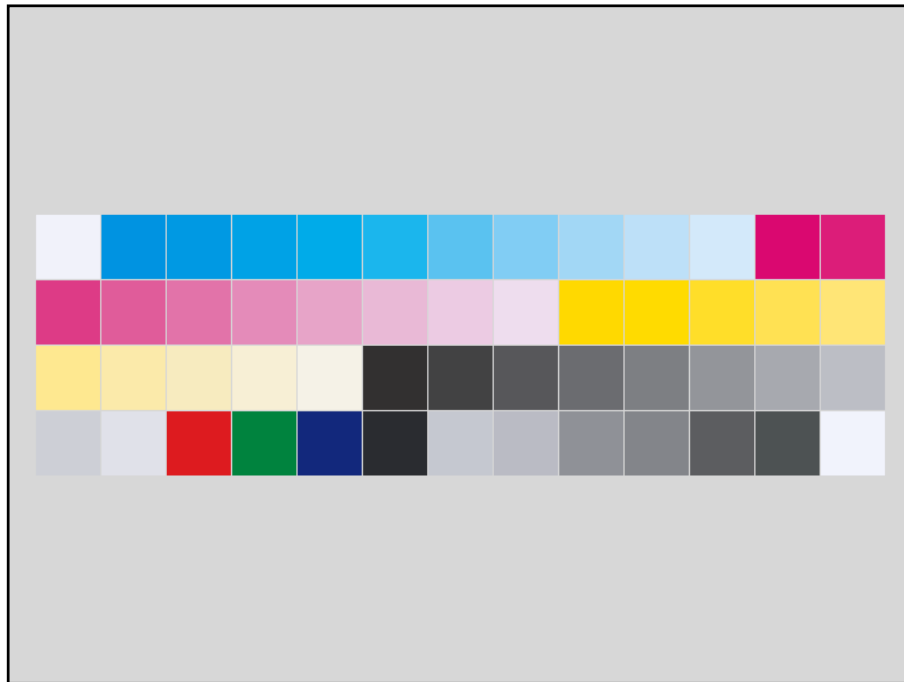


Color quality certificate



Data 1: ECI_bvdm_Gray_Control_Strip(L)_FOGRA39.txt

Measuring method

Illumination: D50
Observer: 2 degree
Filter state: Status DIN16536 NB
Polarisation: none
Measuring device: GretagMacbeth Eye-One

Job name: ECI_bvdm Gray Control Strip (L) FOGRA39

Job number: _____

Customer: Paper: gloss coated 115 g/m

Job name: ECI_bvdm Gray Control Strip (L) FOGRA39

Job number: _____

Customer: Paper: gloss coated 115 g/m

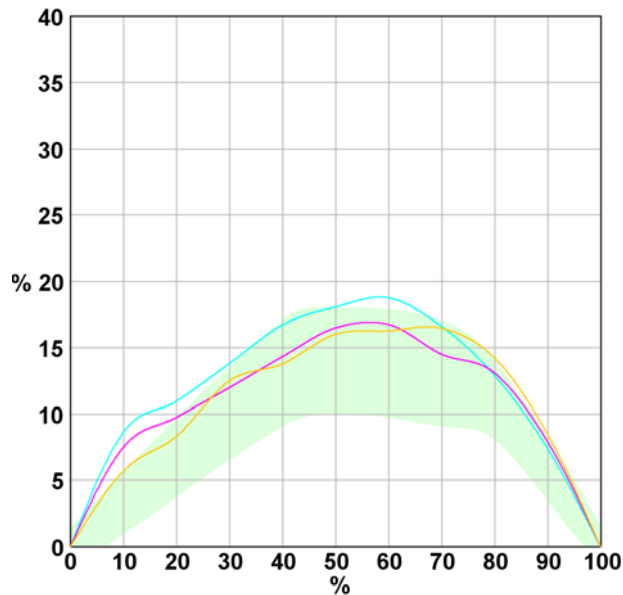


Measurement data: ECI_bvdm_Gray_Control_Strip(L)_FOGRA39.txt

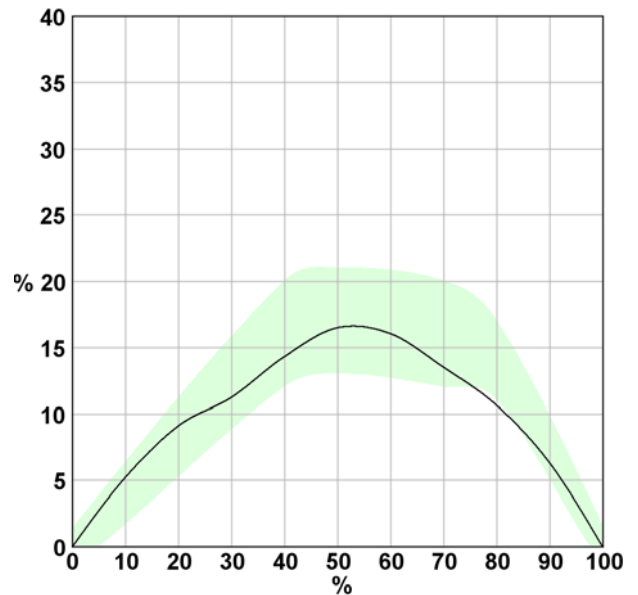
Printing standard: ISO 12647-2_2004 FOGRA 39

Substrate: gloss coated

Dot Gain (CMY)



Dot Gain (K)



	Dot Gain(40)	ΔDot Gain
C:	16.7	3.7
M:	14.3	1.3
Y:	13.8	0.8
K:	14.3	-1.7
Spread:		2.9

	Dot Gain(80)	ΔDot Gain
C:	12.9	1.9
M:	13.1	2.1
Y:	14.2	3.2
K:	10.7	-3.3
Spread:		1.3

	L	a	b
C:	57.3	-34.4	-51.9
M:	49.8	76.4	-1.6
Y:	88.6	-4.0	94.0
K:	27.0	0.9	0.0

	ΔE
C:	4.0
M:	3.3
Y:	1.5
K:	11.0

	Density: Status DIN16536 NB
C:	1.37
M:	1.49
Y:	1.50
K:	1.29

	ΔD
C:	-0.08
M:	0.09
Y:	0.15
K:	-0.46

Job name: ECI_bvdm Gray Control Strip (L) FOGRA39

Job number: _____

Customer: Paper: gloss coated 115 g/m

Data 1: ECI_bvdm_Gray_Control_Strip(L)_FOGRA39.txt



Output

Output process Offset Printing
Output device/type LITHRONE 428
Device manufacturer KOMORI

Paper

Paper class/type gloss coated
Paper brand name

Color

Color sequence KCMY
Color name C: CYAN M: MAGENTA Y: YELLOW K: BLACK
Ink brand name Huber Perflexion

Screening

Screening system default
Dot shape default
Screening frequency 60.0 L/cm
Screening angle C: 165.0° M: 45.0° Y: 90.0° K: 105.0°

Process

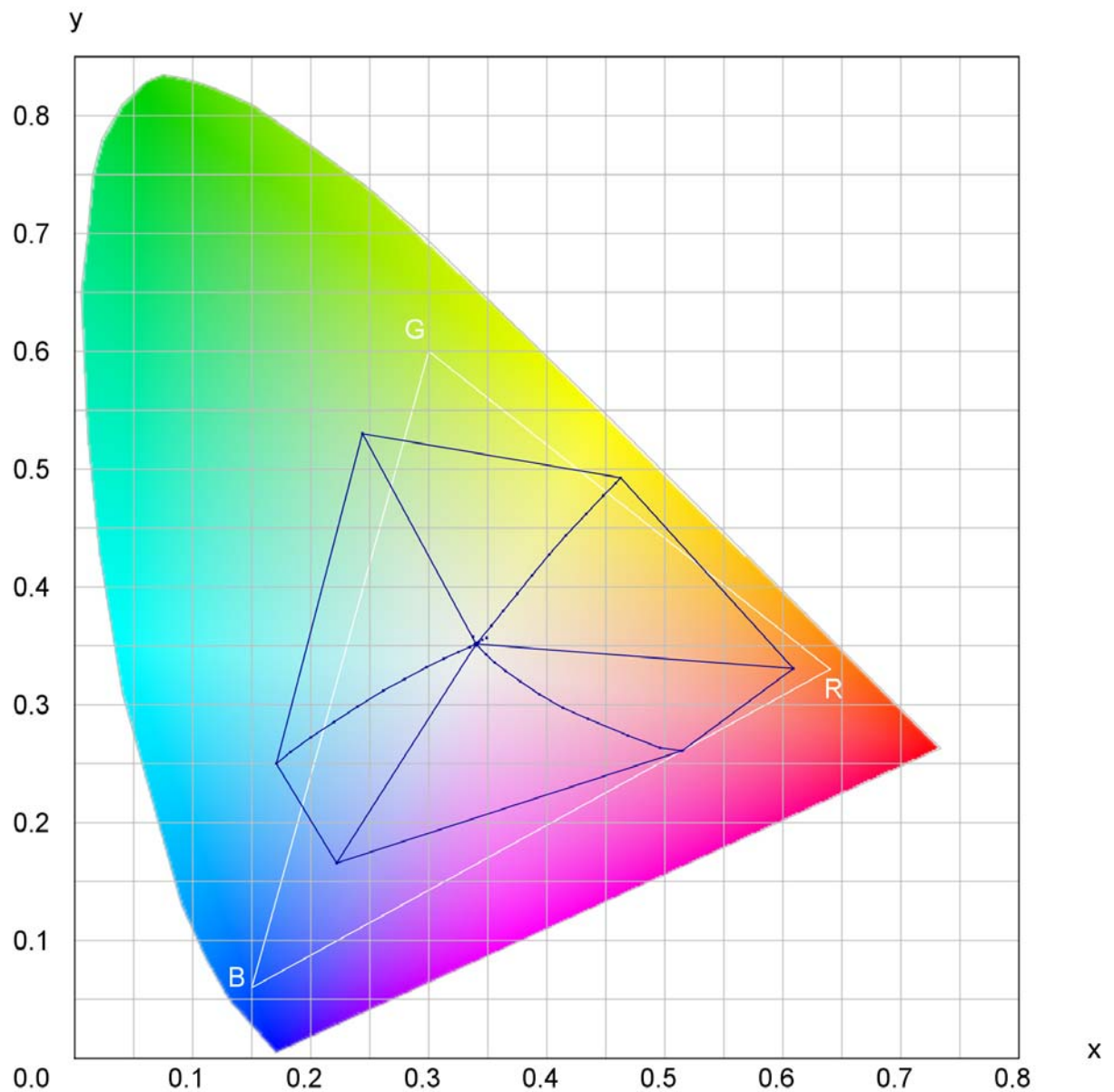
Process standard ISO 12647-2 Offset
Plate process ctp
Plate brand name FujiFilm LP-NV

Job name: ECI_bvdm Gray Control Strip (L) FOGRA39

Job number: _____

Customer: Paper: gloss coated 115 g/m

Data 1: ECI_bvdm_Gray_Control_Strip(L)_FOGRA39.txt

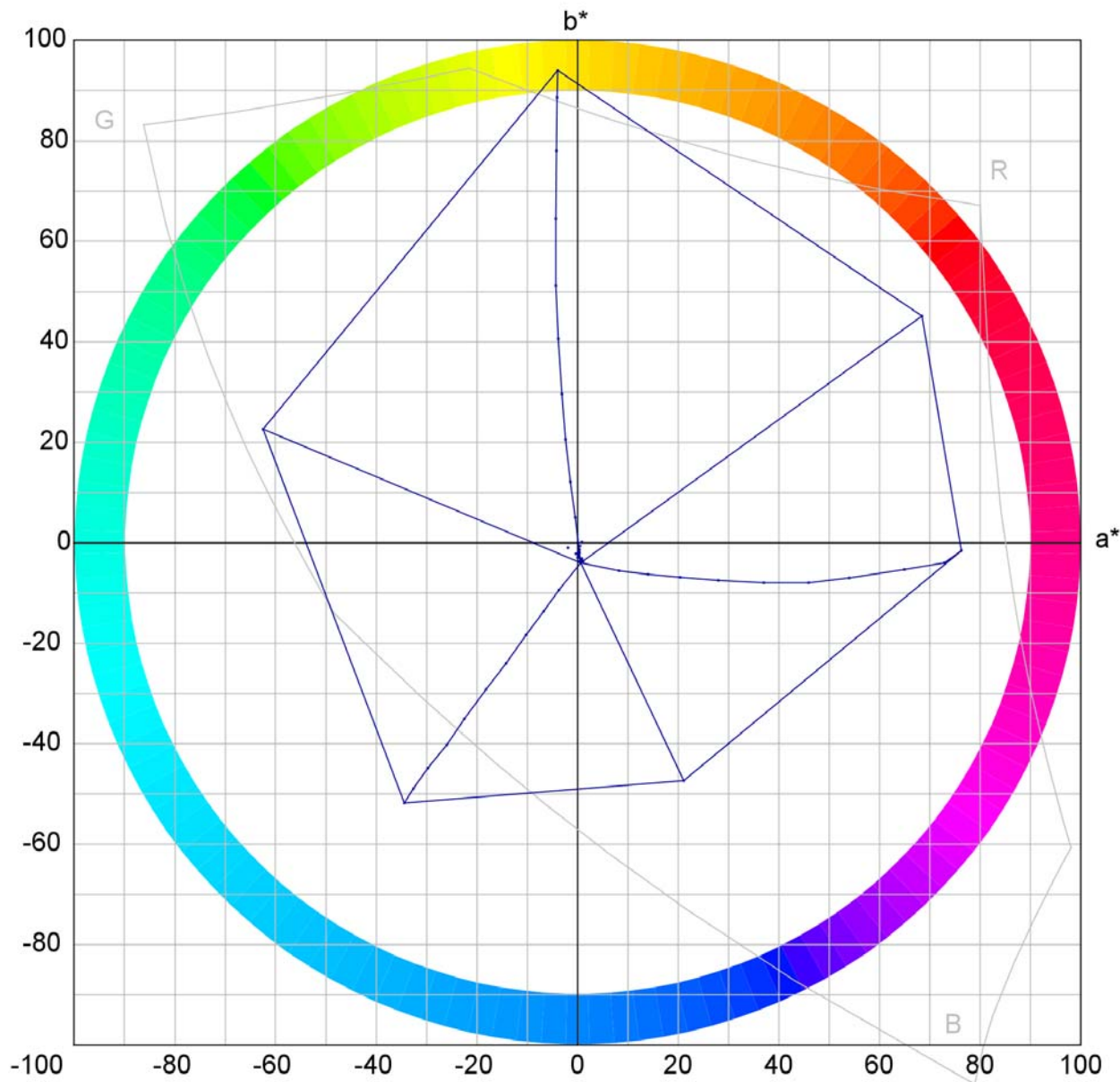


Job name: ECI_bvdm Gray Control Strip (L) FOGRA39

Job number: _____

Customer: Paper: gloss coated 115 g/m

Data 1: ECI_bvdm_Gray_Control_Strip(L)_FOGRA39.txt

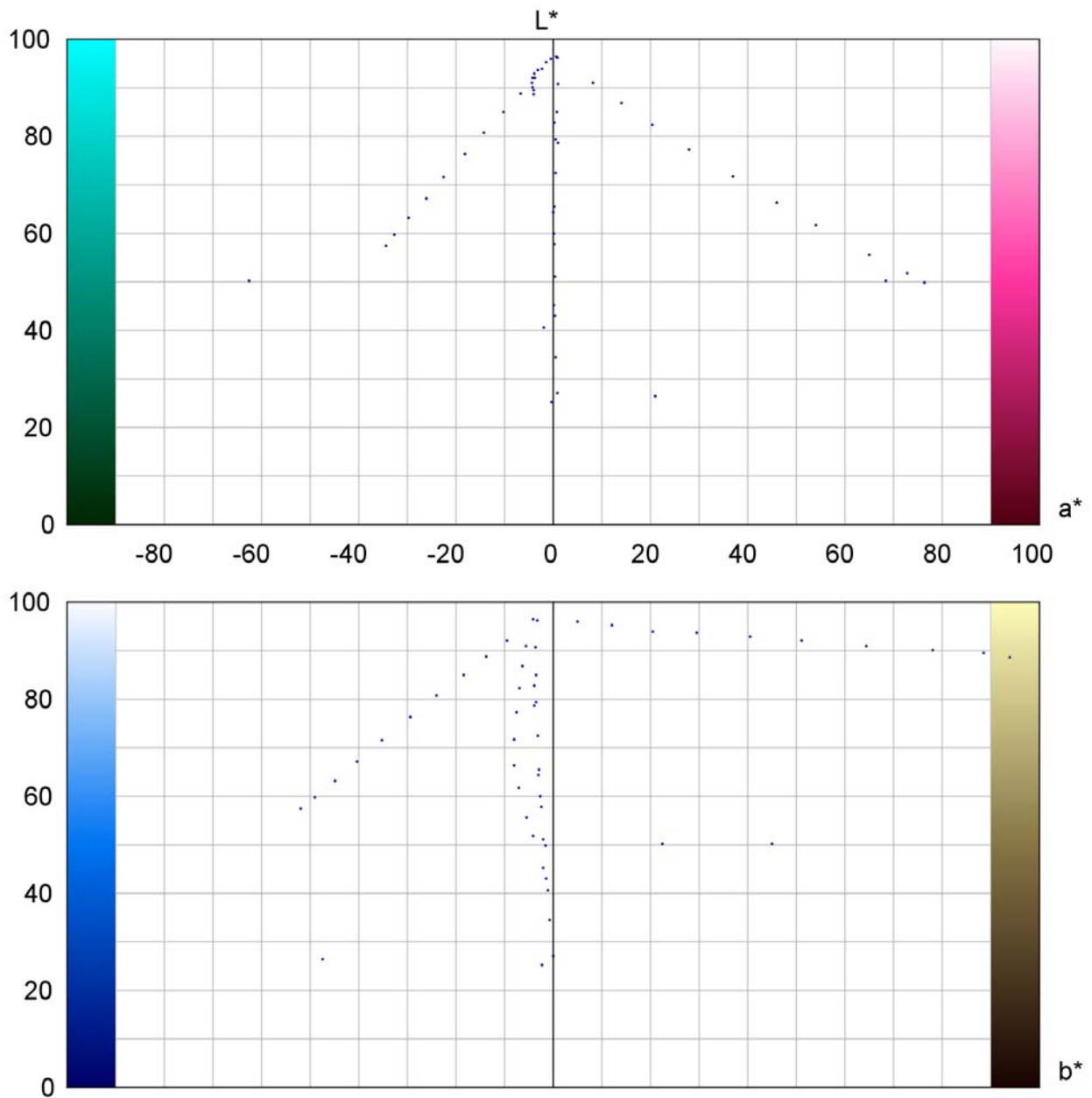


Job name: ECI_bvdm Gray Control Strip (L) FOGRA39

Job number: _____

Customer: Paper: gloss coated 115 g/m

Data 1: ECI_bvdm_Gray_Control_Strip(L)_FOGRA39.txt



Job name: ECI_bvdm Gray Control Strip (L) FOGRA39

Job number: _____

Customer: Paper: gloss coated 115 g/m



Data 1: ECI_bvdm_Gray_Control_Strip(L)_FOGRA39.txt

Patch	Cyan	Magenta	Yellow	Black	L	a	b
1	0.0	0.0	0.0	0.0	96.2	0.9	-3.2
2	100.0	0.0	0.0	0.0	57.3	-34.4	-51.9
3	90.0	0.0	0.0	0.0	59.7	-32.6	-48.9
4	80.0	0.0	0.0	0.0	63.1	-29.7	-44.8
5	70.0	0.0	0.0	0.0	67.2	-26.0	-40.3
6	60.0	0.0	0.0	0.0	71.5	-22.5	-35.2
7	50.0	0.0	0.0	0.0	76.3	-18.2	-29.3
8	40.0	0.0	0.0	0.0	80.7	-14.2	-24.0
9	30.0	0.0	0.0	0.0	84.9	-10.2	-18.4
10	20.0	0.0	0.0	0.0	88.7	-6.7	-13.7
11	10.0	0.0	0.0	0.0	92.0	-3.7	-9.4
12	0.0	100.0	0.0	0.0	49.8	76.4	-1.6
13	0.0	90.0	0.0	0.0	51.8	72.9	-4.0
14	0.0	80.0	0.0	0.0	55.6	65.0	-5.4
15	0.0	70.0	0.0	0.0	61.6	54.0	-7.0
16	0.0	60.0	0.0	0.0	66.3	46.0	-8.0
17	0.0	50.0	0.0	0.0	71.7	37.0	-8.0
18	0.0	40.0	0.0	0.0	77.2	28.0	-7.5
19	0.0	30.0	0.0	0.0	82.3	20.4	-6.9
20	0.0	20.0	0.0	0.0	86.8	14.0	-6.3
21	0.0	10.0	0.0	0.0	90.9	8.2	-5.6
22	0.0	0.0	100.0	0.0	88.6	-4.0	94.0
23	0.0	0.0	90.0	0.0	89.4	-4.0	88.7
24	0.0	0.0	80.0	0.0	90.0	-4.2	78.1
25	0.0	0.0	70.0	0.0	90.9	-4.3	64.5
26	0.0	0.0	60.0	0.0	92.0	-4.3	51.1
27	0.0	0.0	50.0	0.0	92.9	-3.8	40.5
28	0.0	0.0	40.0	0.0	93.6	-3.1	29.6
29	0.0	0.0	30.0	0.0	93.8	-2.3	20.5
30	0.0	0.0	20.0	0.0	95.2	-1.4	12.1
31	0.0	0.0	10.0	0.0	95.9	-0.4	5.0
32	0.0	0.0	0.0	100.0	27.0	0.9	0.0
33	0.0	0.0	0.0	90.0	34.5	0.6	-0.6
34	0.0	0.0	0.0	80.0	42.9	0.4	-1.4
35	0.0	0.0	0.0	70.0	51.0	0.4	-2.0
36	0.0	0.0	0.0	60.0	57.7	0.3	-2.4
37	0.0	0.0	0.0	50.0	65.5	0.3	-2.8
38	0.0	0.0	0.0	40.0	72.4	0.5	-3.1
39	0.0	0.0	0.0	30.0	79.3	0.6	-3.5
40	0.0	0.0	0.0	20.0	84.9	0.7	-3.5
41	0.0	0.0	0.0	10.0	90.7	1.0	-3.6
42	0.0	100.0	100.0	0.0	50.1	68.5	45.1
43	100.0	0.0	100.0	0.0	50.2	-62.5	22.6
44	100.0	100.0	0.0	0.0	26.4	21.1	-47.4

Job name: ECI_bvdm Gray Control Strip (L) FOGRA39

Job number: _____

Customer: Paper: gloss coated 115 g/m

Data 1: ECI_bvdm_Gray_Control_Strip(L)_FOGRA39.txt



Patch	Cyan	Magenta	Yellow	Black	L	a	b
45	100.0	100.0	100.0	0.0	25.2	-0.3	-2.3
46	0.0	0.0	0.0	25.0	82.7	0.3	-3.8
47	25.0	19.0	19.0	0.0	78.6	1.1	-3.8
48	0.0	0.0	0.0	50.0	64.3	0.1	-3.0
49	50.0	50.0	40.0	0.0	60.0	0.2	-2.7
50	0.0	0.0	0.0	75.0	45.2	0.2	-2.0
51	75.0	64.0	64.0	0.0	40.6	-1.9	-1.0
52	0.0	0.0	0.0	0.0	96.5	0.6	-4.0